



Nathaniel Close, Sarisbury Green, SO31  
£350,000



- An end terraced home which has been beautifully maintained by the current owner
  - Two Double Bedrooms With An En-Suite Shower Room To The Master
    - Open-plan kitchen/diner with integrated appliances
      - Secluded landscaped garden
      - Allocated parking for two cars
    - Walking distance to the local schools, shops and amenities
      - Easy access to the motorway

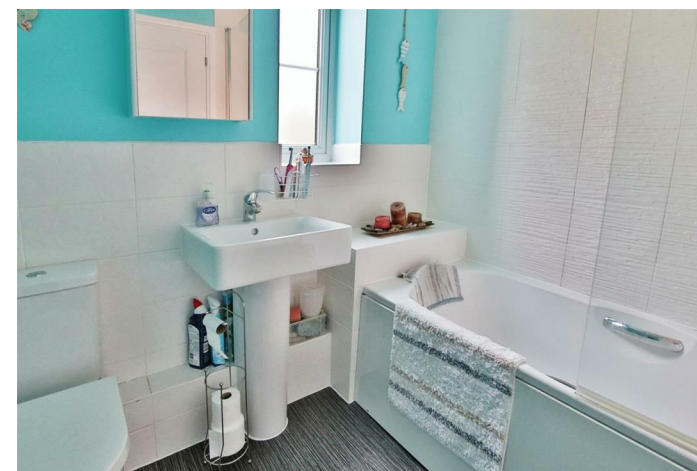
Situated in the popular location of Admirals Wood in Sarisbury Green is this end terrace home offering both light and spacious living accommodation which has been beautifully maintained by the current owners.

Upon entering the property is a lounge with stairs to the first floor. Extending across the rear of the property is the kitchen/ diner fitted with an extensive range of units with integrated appliances. A cloakroom completes the ground floor accommodation.

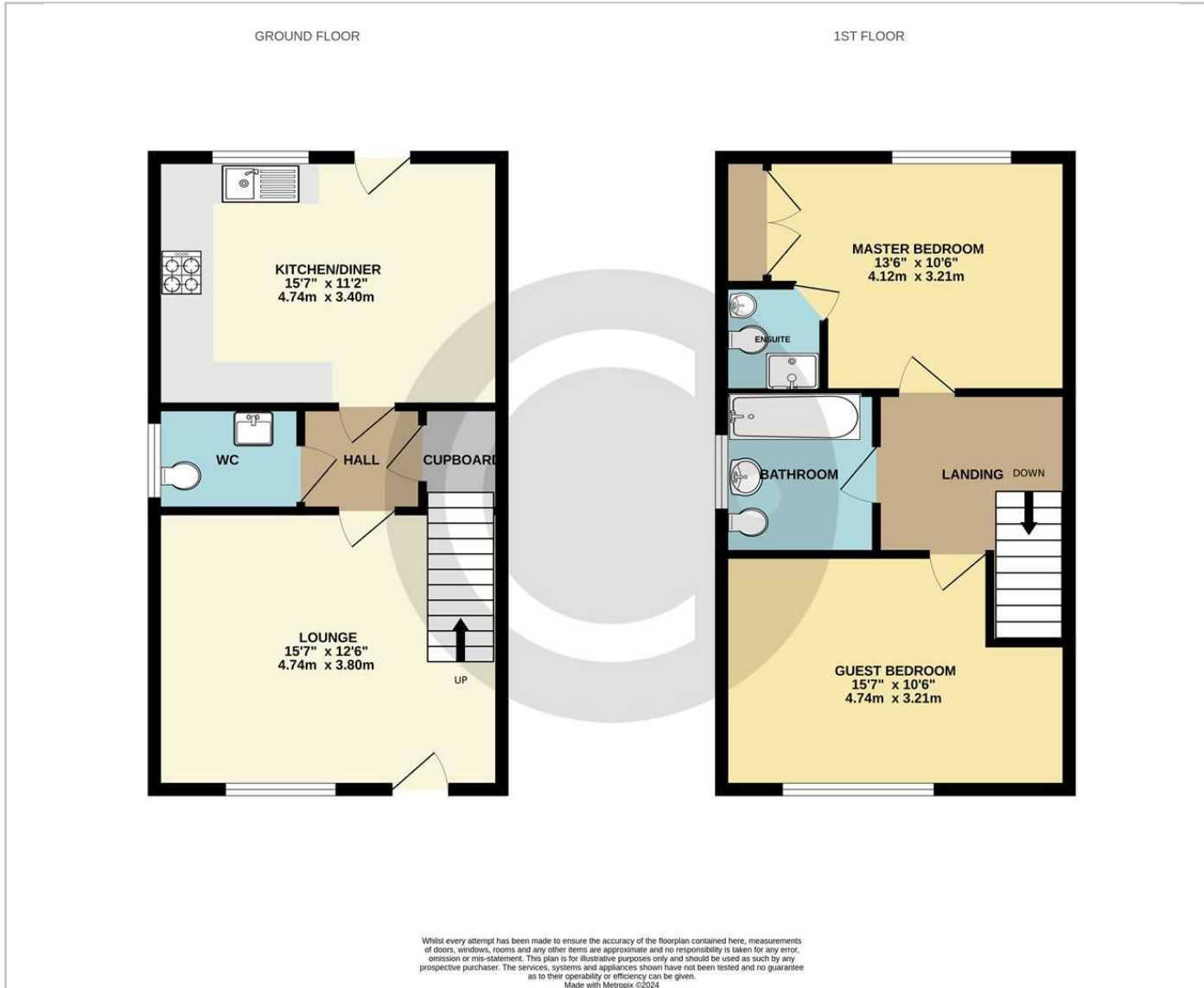
Upstairs the master bedroom benefits an en-suite shower room, there is a further double bedroom and family bathroom completing the internal accommodation.

To the front and side of the property there is driveway and allocated parking. There is a beautiful sunny enclosed garden to the rear offering a good degree of privacy, there is a patio area adjacent to the rear with a manicured lawn beyond.

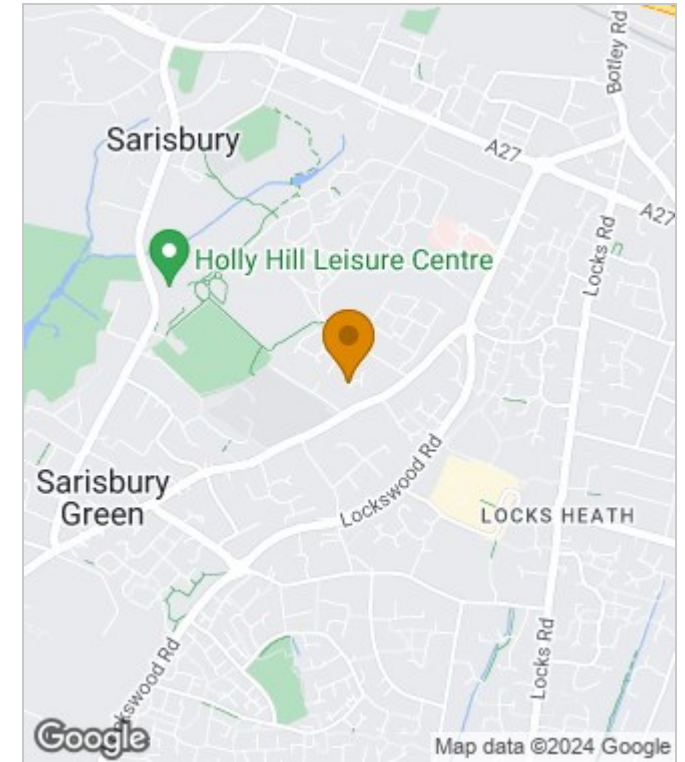
Situated in a leafy green location with traditional cricket green, Sarisbury Green is also the home of Holly Hill Woodland Park. The area is home to an infant and corresponding junior school, namely Sarisbury Infant and Junior Schools as well as a secondary school, Brookfield.



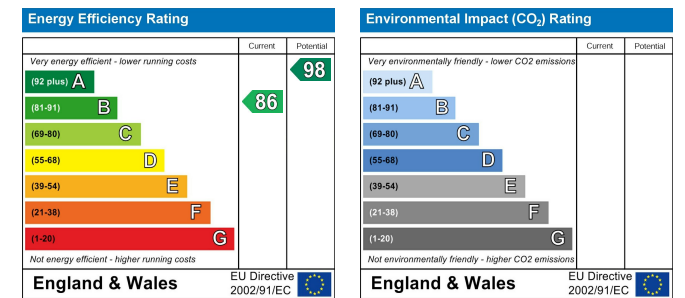
## Floor Plans



## Area Map



## Energy Performance Graph



These particulars, whilst believed to be accurate are set out as a general outline only for guidance and do not constitute any part of an offer or contract. Intending purchasers should not rely on them as statements of representation of fact, but must satisfy themselves by inspection or otherwise as to their accuracy. No person in this firm's employment has the authority to make or give any representation or warranty in respect of the property.