



Burgundy Close, Locks Heath, SO31
£350,000



- A nicely presented family home offering bright and spacious well laid out accommodation
 - Lounge/ diner with a pleasant leafy outlook
 - Fitted kitchen overlooking the front aspect
 - Three bedrooms, family bathroom and large cloakroom
- Southerly facing rear garden with a lovely decked area to sit in the coming summer months
 - Garage and plentiful parking
- Within walking distance of the local schools and shops
 - Offered for sale with no onward chain

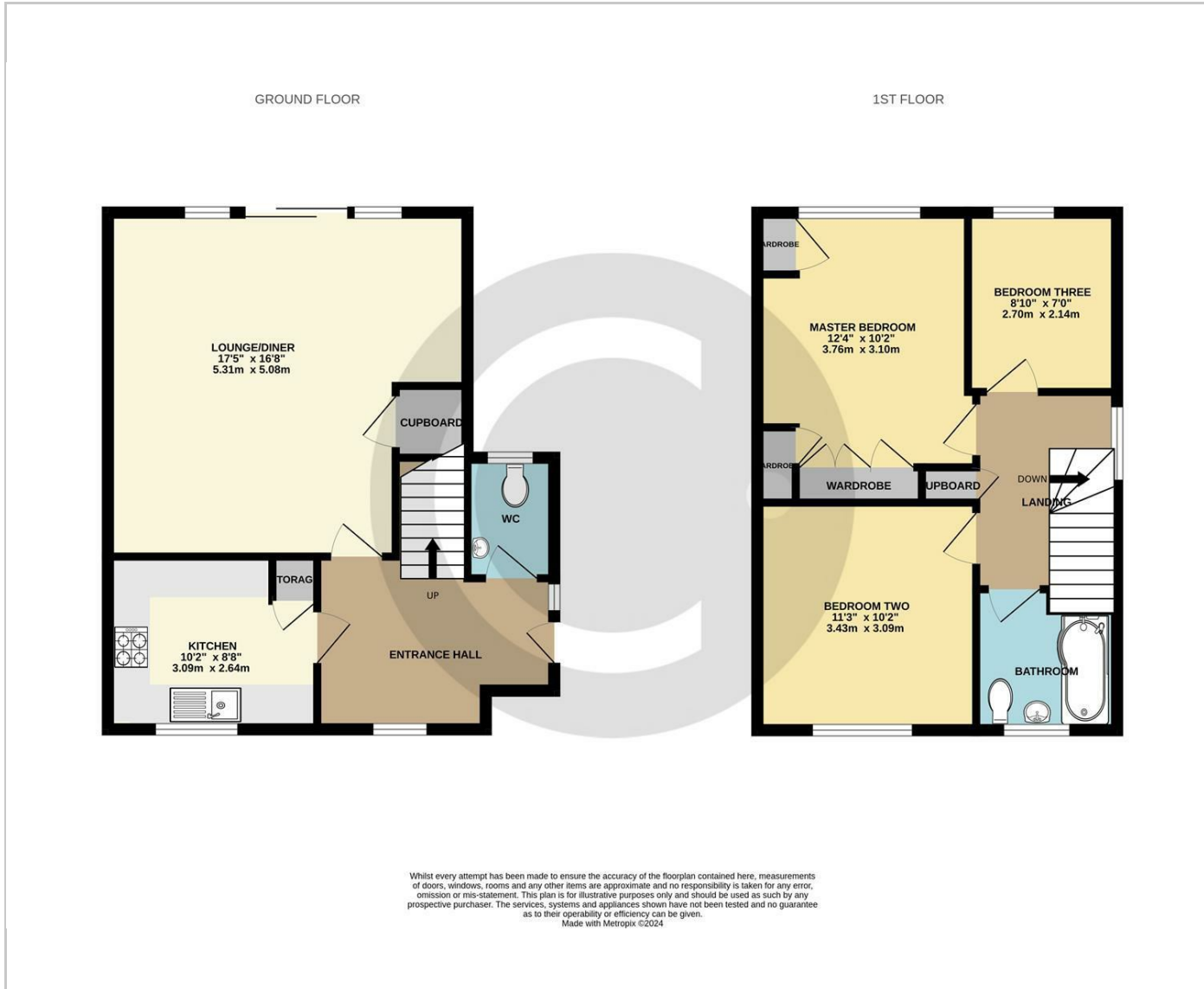
This lovely family home is situated in a quiet cul-de-sac off Crescent Road where properties rarely come to the market and offers spacious well laid out accommodation. It is situated close to well-regarded schools of all ages, bus routes and shopping facilities.

The spacious accommodation includes a large entrance hall which provides access to the ground floor cloakroom, fitted kitchen and open plan lounge and dining room which extends across the rear and offers a lovely leafy outlook. The first floor provides three bedrooms with built-in wardrobes to the master and a family bathroom. There is plenty of storage on offer and the large windows throw in plenty of light making this a lovely home to live in.

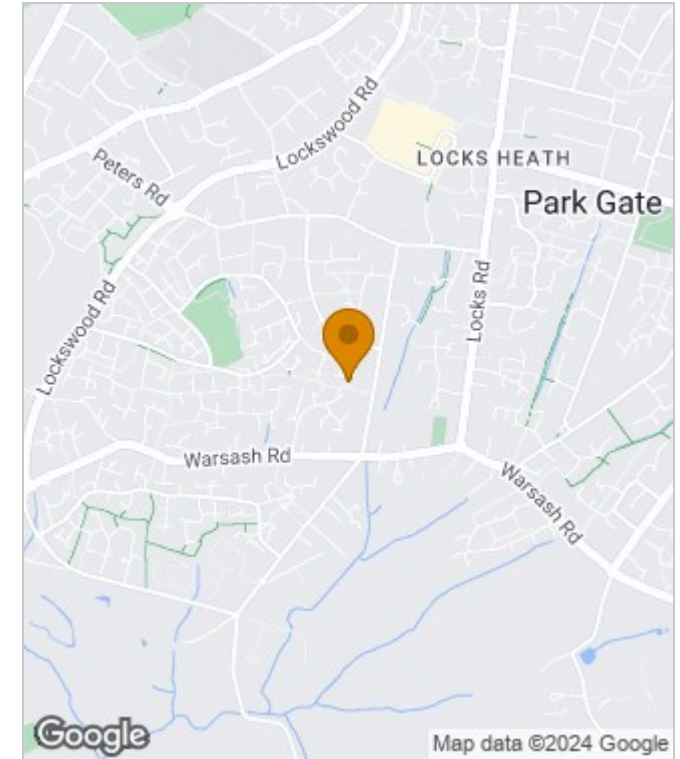
Outside the rear garden benefits from having a Southerly aspect and the trees provide a good level of screening for privacy. There is a decked area adjoining the house with steps leading down to the faux lawn for ease of maintenance. To the front of the property is the driveway allowing parking for two/ three vehicles and access to the garage. driveway parking and front garden



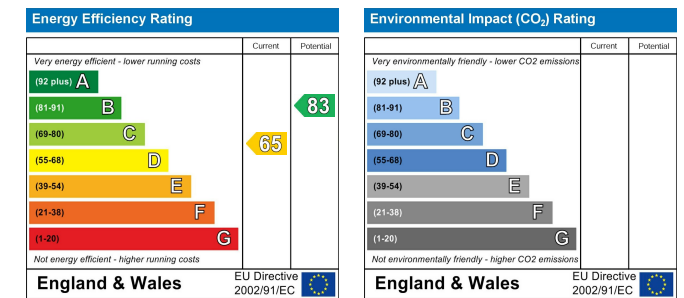
Floor Plans



Area Map



Energy Performance Graph



These particulars, whilst believed to be accurate are set out as a general outline only for guidance and do not constitute any part of an offer or contract. Intending purchasers should not rely on them as statements of representation of fact, but must satisfy themselves by inspection or otherwise as to their accuracy. No person in this firm's employment has the authority to make or give any representation or warranty in respect of the property.