



Chimney Pots  
ESTATE AGENTS

YOUR HOME • OUR PASSION



Cyprus Road, Titchfield Common

Asking Price £340,000



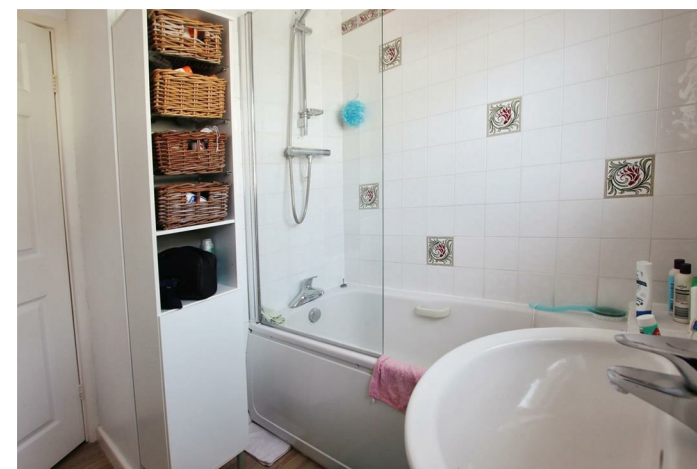
- A beautifully presented semi detached bungalow offering bright and spacious accommodation
- Lovely lounge with feature fireplace and a pleasant view of the Westerly aspect facing rear garden
  - Lounge and separate dining room
  - Two bedrooms (was three) and modern bathroom
- Sunny secluded garden and ample driveway parking
  - Convenient non estate location
  - Internal viewing highly recommended

This charming semi-detached bungalow, located in Titchfield Common, has been lovingly maintained by its current owner. With over 700 sq.ft. of internal space, the property offers a comfortable layout ideal for relaxed living.

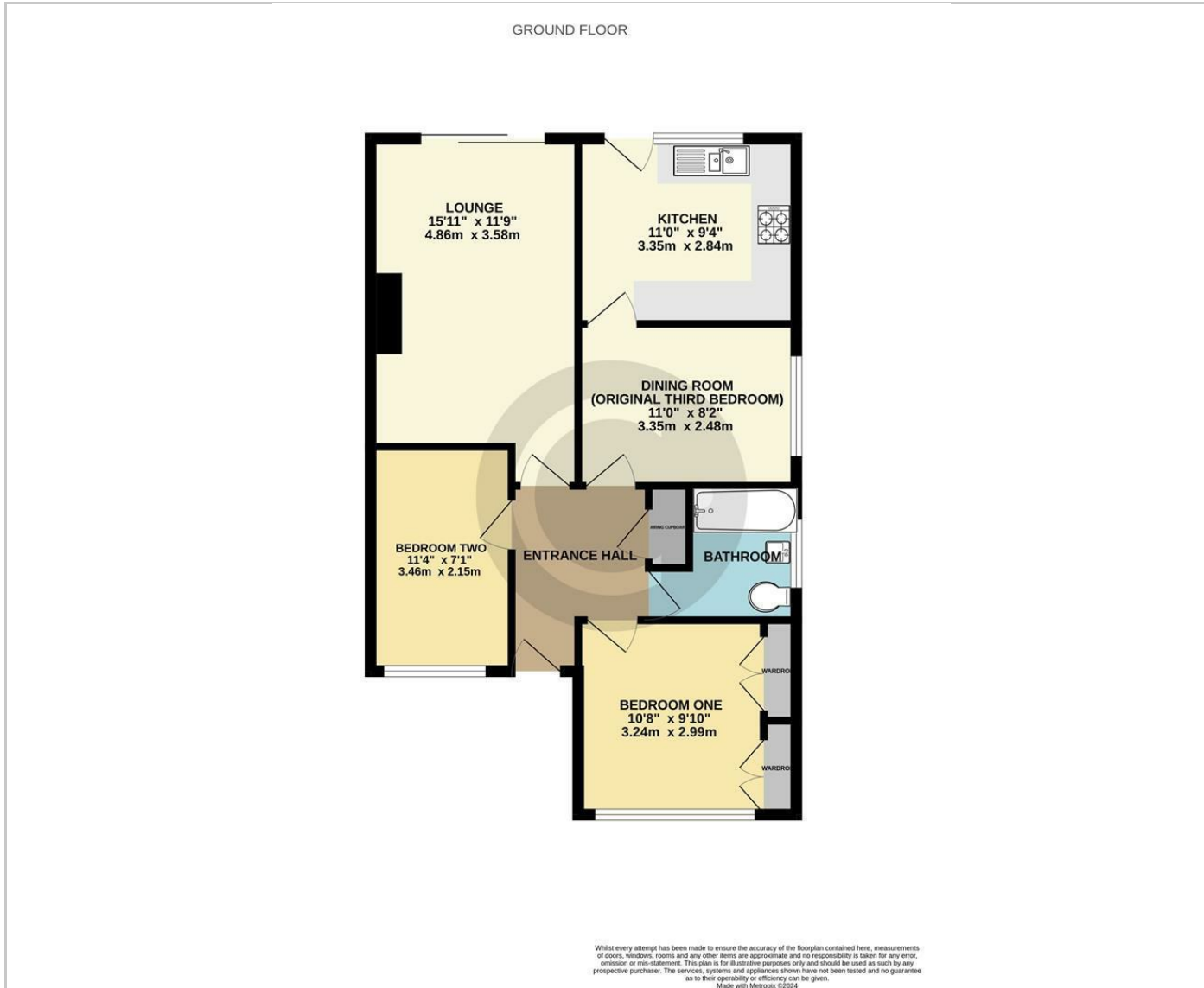
Upon entering, you are greeted by an entrance hallway. Positioned at the front are two bedrooms, complemented by a bathroom featuring a window for natural light. The lounge, situated towards the rear, provides patio doors opening onto the garden, providing a seamless indoor-outdoor flow. A dining room, accessed from the hallway, leads to the kitchen which also offers access to the rear garden. Originally designed as a third bedroom, the dining room could potentially be converted back if desired, the kitchen was previously accessed via the living room.

Externally, the property boasts a sizable front garden with a long driveway extending to the full depth of the plot. While the detached single garage has been removed, the hardstanding remains, offering the opportunity for a new structure to be erected (subject to relevant permissions). The rear garden benefits from a pleasant westerly aspect and provides a good level of privacy, ideal for outdoor enjoyment.

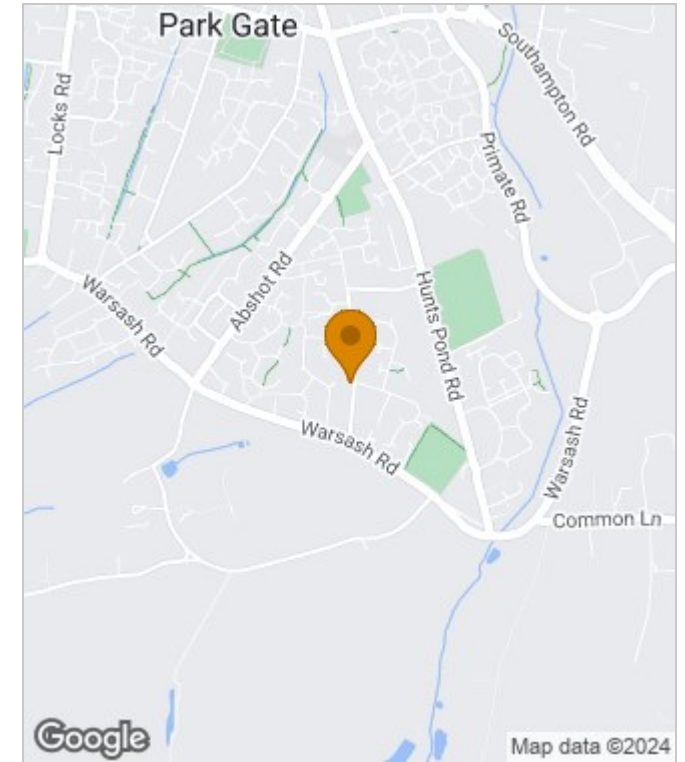
This bungalow is situated in a non-estate location, offering a peaceful setting within Titchfield Common. With its adaptable layout, ample parking, and well-maintained gardens, this property presents a wonderful opportunity for those seeking a comfortable home.



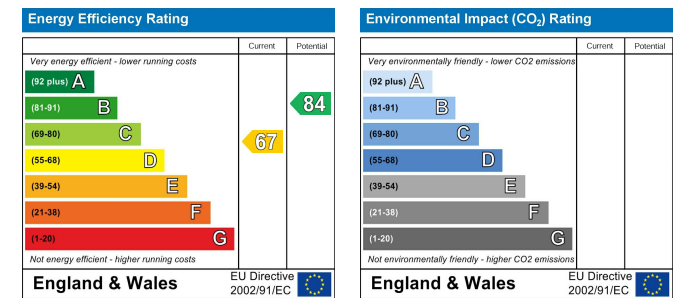
## Floor Plans



## Area Map



## Energy Performance Graph



These particulars, whilst believed to be accurate are set out as a general outline only for guidance and do not constitute any part of an offer or contract. Intending purchasers should not rely on them as statements of representation of fact, but must satisfy themselves by inspection or otherwise as to their accuracy. No person in this firm's employment has the authority to make or give any representation or warranty in respect of the property.